

1 ZÖLLNER Automatic Signalling System acc. to the Colregs 1972 - comprising:

1 Electric Bell 350 EL

approx. 350 mm Ø
with electro-mechanical bell striker,
but also for hand operation
in accordance with the Colregs 1972, Annex III, 2(a) and (b)
made of bronze, with suspension mounting
sound pressure level at 1 metre: not less than 110 dB
design to drawing 4630
installation site: forecastle
approx. net weight 32 kg

1 Electric Gong 500 EL

approx. 500 mm Ø
with electro-mechanical striking mechanism,
but also for hand operation
in accordance with the Colregs 1972, Annex III, 2(a) and (b)
made of brass, with suspension mounting consisting
of heavy steel frame with stainless steel springs
sound pressure level at 1 metre: 110 dB
design to drawing 4538
installation site: stern
approx. net weight 24 kg

1 Signal Automaton Type 1+ - surface mounting type -

operating on 220 V AC 1phase, 6.3 Amps
comprising:

- a) control unit for installation in front plate of bridge console, as per drawing 4973-4
- b) switch box, water-proof design to drawing 4619 for separate installation within wheel house

timing the following signals acc. to the Colregs 1972, Rule 35(g):

1. vessels of less than 100 metres in length:
each minute for about 5 seconds rapid ringing of bell
2. vessels of more than 100 metres in length:
each minute for about 5 seconds rapid ringing of bell
and, in succession, for about 5 seconds rapid striking of gong

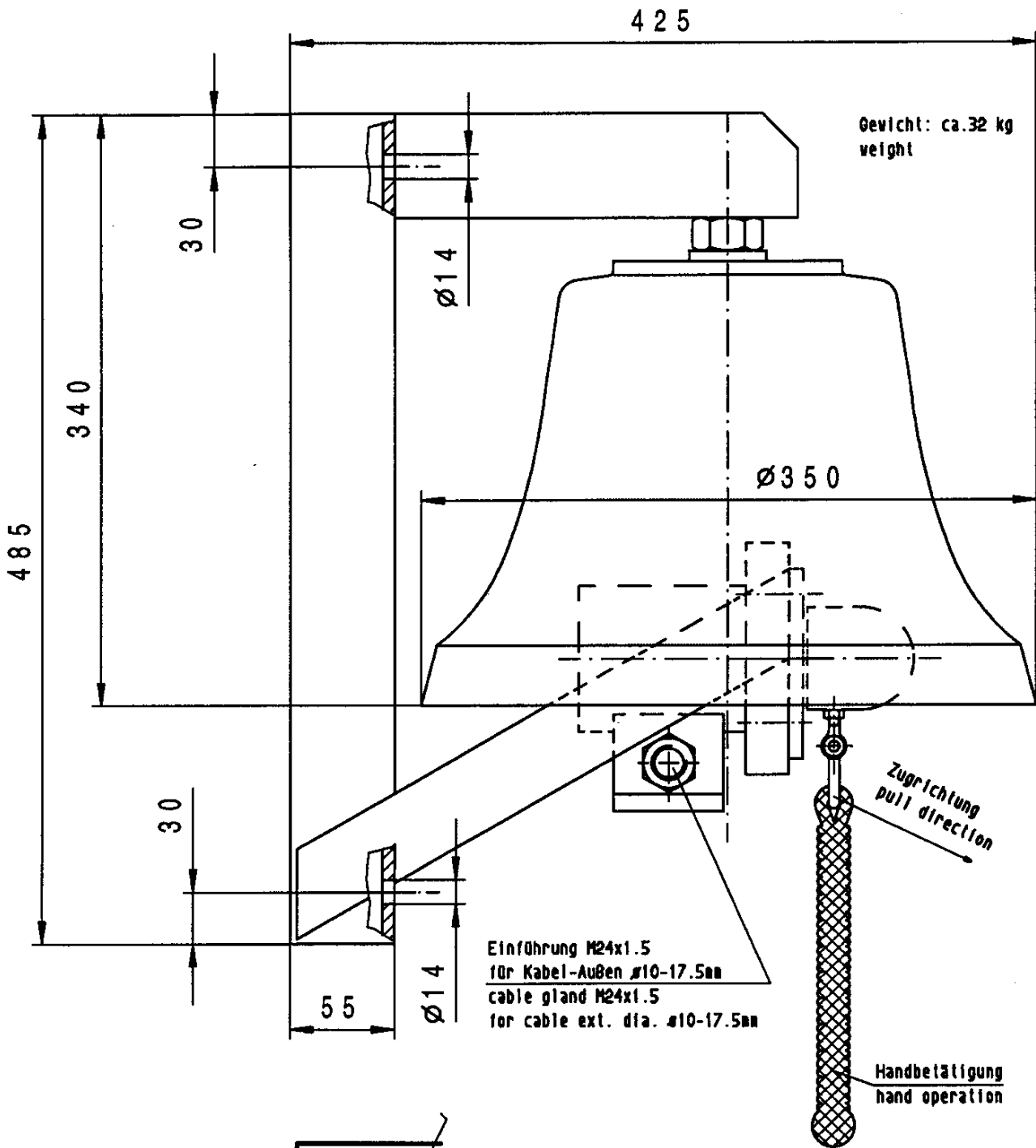
approx. net weight of control unit: 0.5 kg
approx. net weight of switch box: 12.0 kg

1 Anti-Condensation Heating 100 VA - 220 V AC

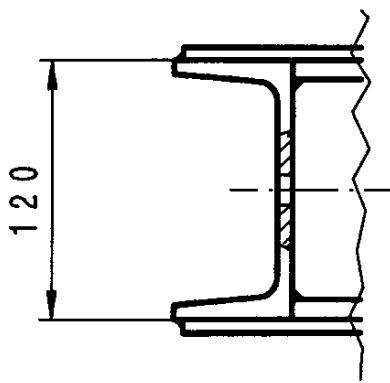
as condensation protection for bell and gong
ready installed in switch box 4619
approx. net weight 6 kg



Glocke elektromechanisch angetrieben Bell with electro-mechanical drive



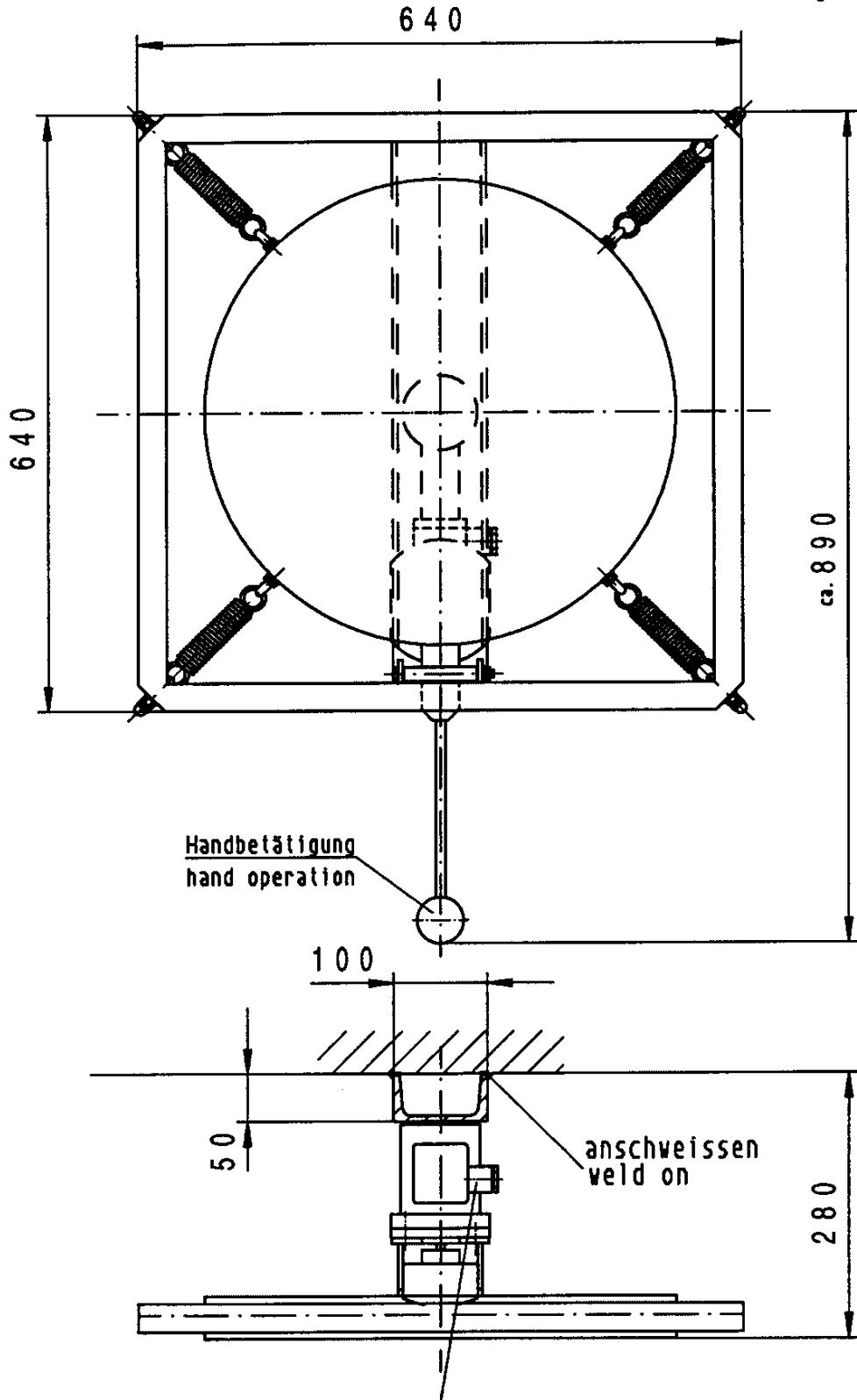
Änderung vorbehalten!
Subject to alteration!





Gong elektromechanisch angetrieben
Gong with electro-mechanical drive

Gewicht: ca. 24 kg
weight



Einführung M24x1.5 für Kabel-Außen \varnothing 10-17.5mm
cable gland M24x1.5 for cable ext. dia. \varnothing 10-17.5mm

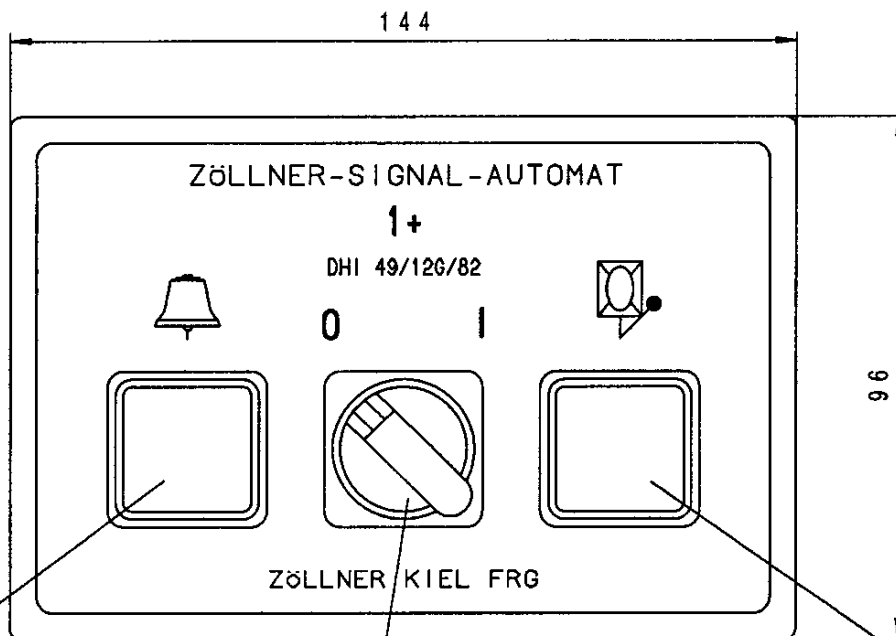
Änderung vorbehalten!
Subject to alteration!



Schalteinheit für Signalautomat 1+ Glocke-Gong
 control unit for Signal Automaton 1+ bell-gong

SP
 4973

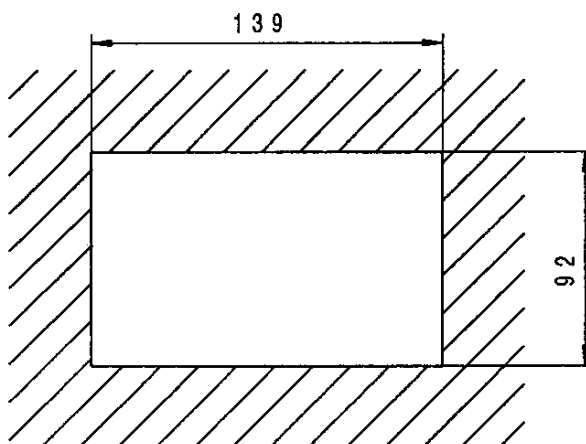
Gewicht ca. 0.5kg
 weight



Handtaster Glocke
 hand key bell

Automatik EIN
 automatic OFF

Handtaster Gong
 hand key gong



Einbauöffnung
 installation opening

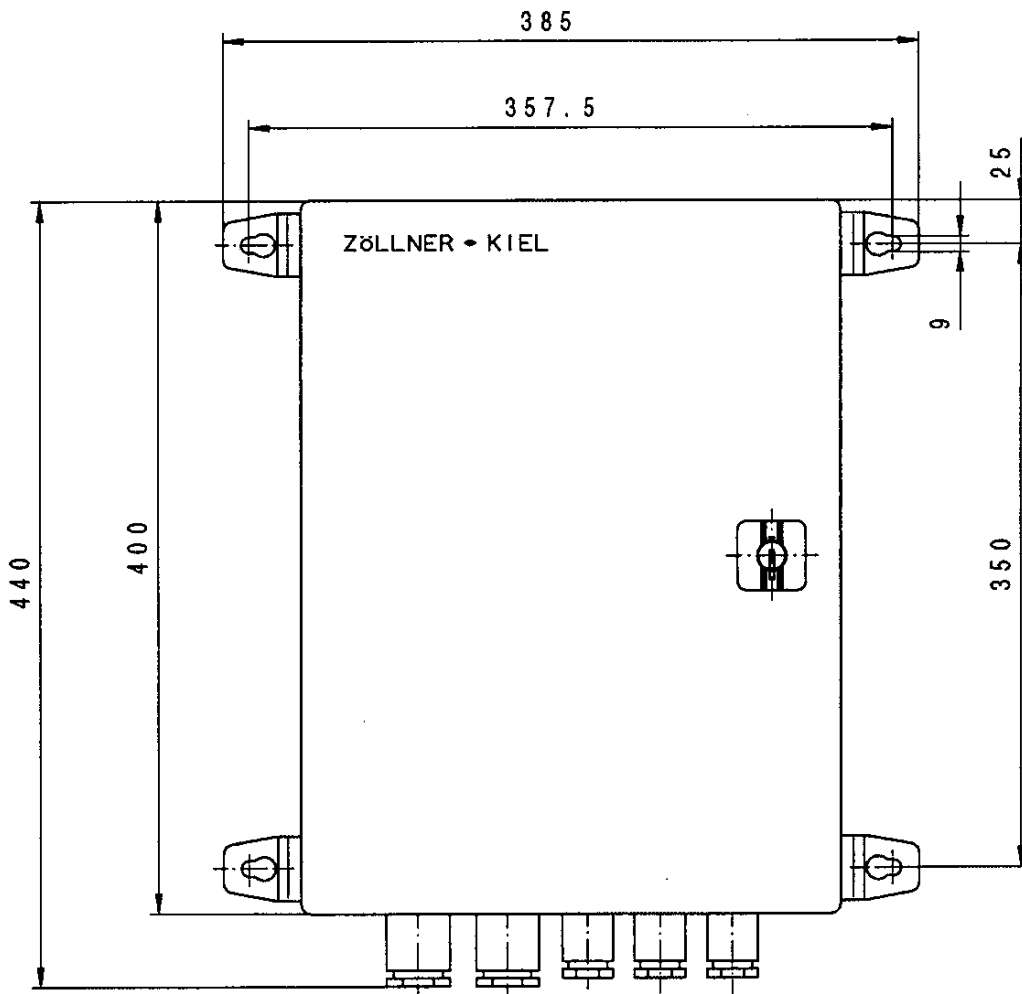
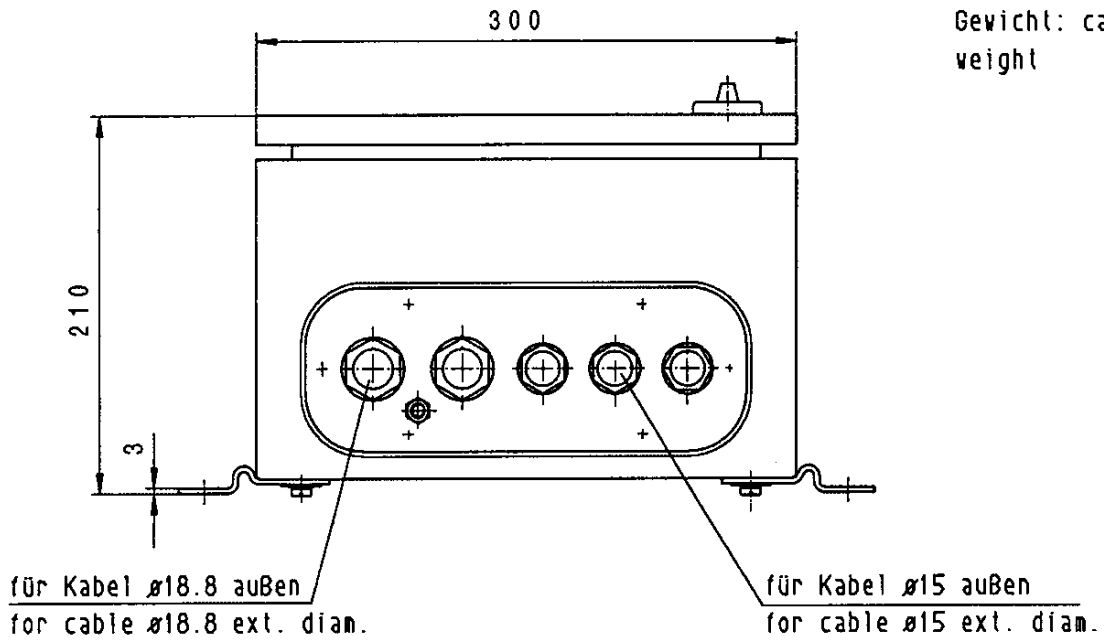
Einbautiefe 115mm
 plug in depth

Änderungen vorbehalten! Subject to alteration!



Schaltkasten für Automat 1+ Glocke-Gong
Switchbox for automaton 1+ bell-gong
mit/ohne Stillstandsheizung ; with/without space heating

SP
4619

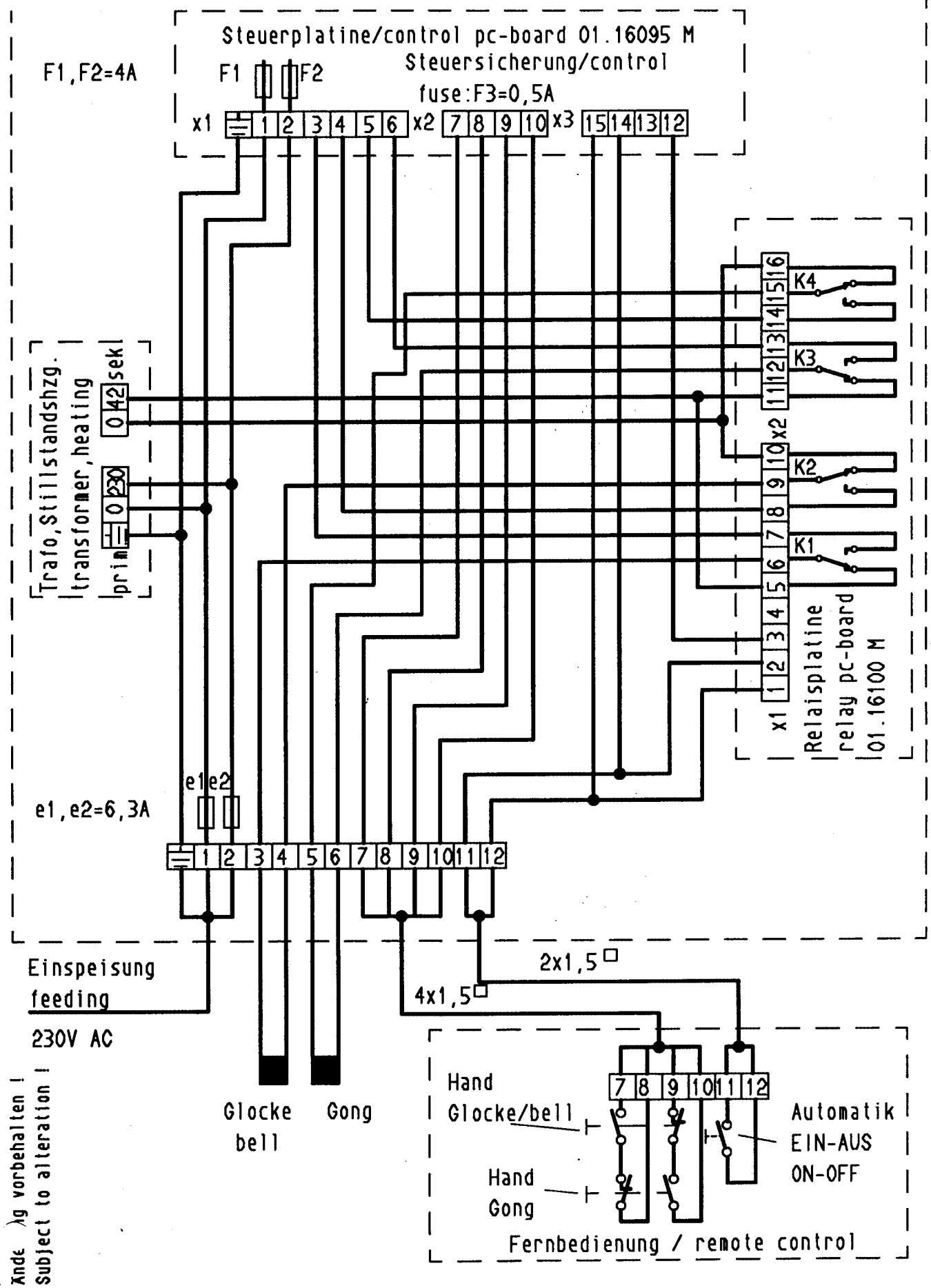


Anderungen vorbehalten! Subject to alterations!

Kabelverschraubung nach DIN 89280 für MCGG-Kabel
cable gland according to DIN 89280 for MCGG cable



Automat 1+ mit Stillstandsheizung, Glocke und Gong
 Automaton 1+ with Heating, Bell and Gong



Änderung vorbehalten!
 Subject to alteration!